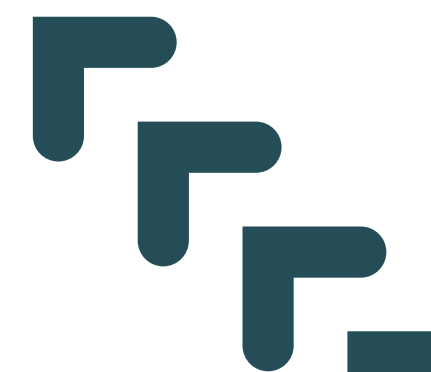




OPERATIONAL STRATEGIES FOR RUNNING A TRANSITIONAL HOUSE EFFECTIVELY"

Presented by: Anita Lynch



GET TO KNOW US

About Our Company

Road 2 Recovery (R2R) has been supporting the reentry population for more than 11 years, providing a variety of services such as mental health and substance use treatment, life skills development, employment assistance, and transitional housing.

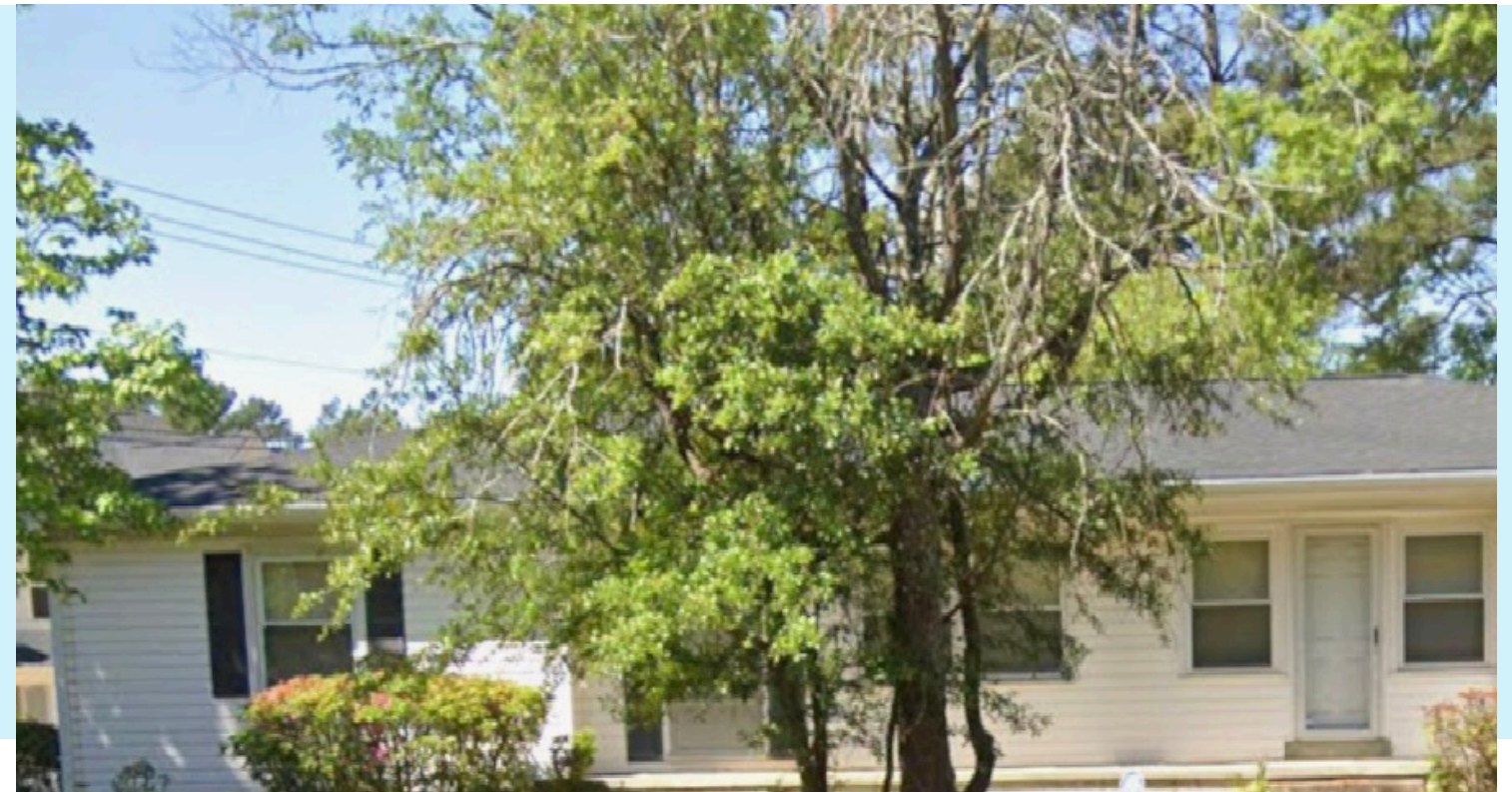


CEO

Anita Lynch has been overseeing and running transitional housing since 2014.



OUR HOMES





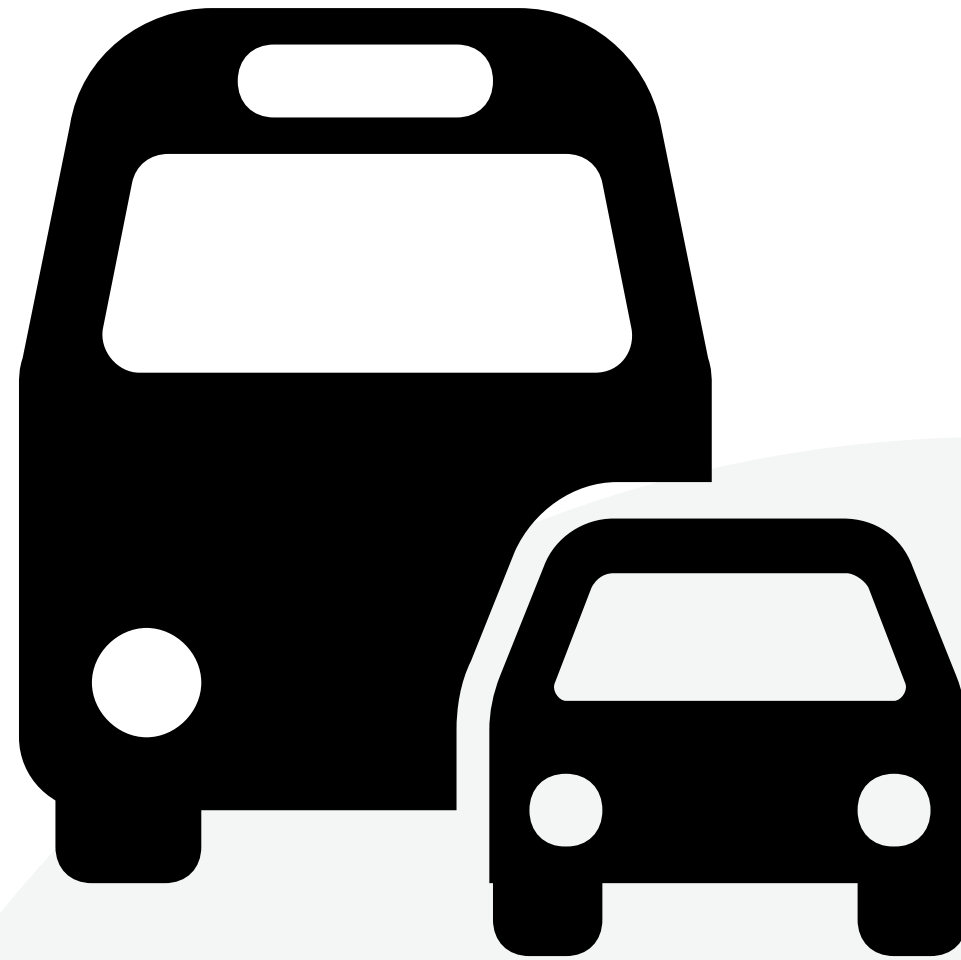


ARE YOU A PROBLEM SOLVER?

CHALLENGES



Housing

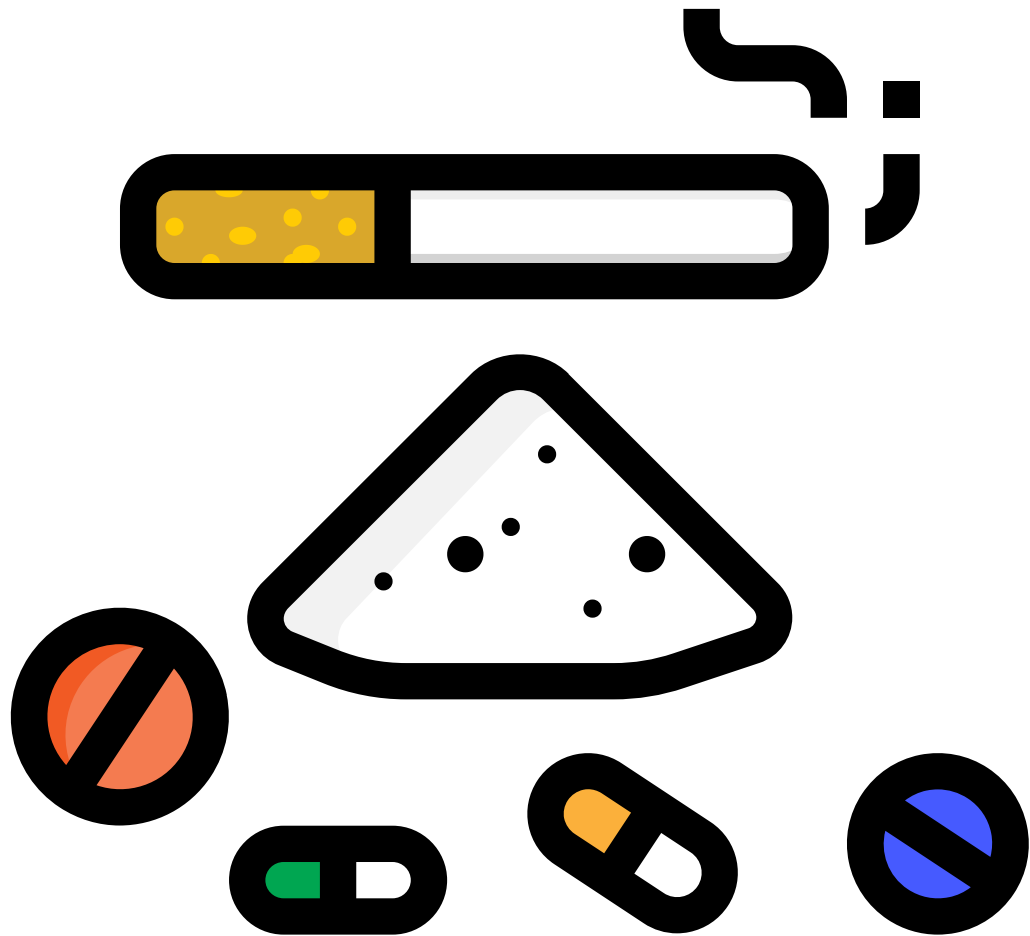


Transportation



Employment

BARRIERS



Substance Use



Mental illness



**SKILL
LEVEL**
Skills

**CHALLENGES WITH
ESTABLISHING AND
OPERATING A
TRANSITIONAL HOUSE**

Location

Funding

Stigma

Staffing

Scope of Practice



CHALLENGES

Funding and Financial Sustainability:

Securing consistent and reliable funding is one of the most significant hurdles. Transitional homes often rely on a mix of donations, government grants, and private investments, but these funds can be unpredictable. Long-term sustainability may be a concern, especially if the home is not self-sustaining or reliant on fluctuating sources of income.

Zoning and Legal Regulations:

Finding an appropriate location that meets local zoning laws and building codes can be difficult. Many municipalities have strict regulations regarding where transitional housing can be located, particularly in residential areas. Navigating these legal frameworks can delay or complicate the setup process.

CHALLENGES

Staffing and Resources:

Ensuring that there is enough skilled and compassionate staff to manage the home, provide counseling or case management, and offer support services (such as employment assistance or life skills training) can be challenging. Staff turnover or burnout can also be a concern, as working in transitional housing often involves managing difficult or high-risk individuals.

Continuum of Care:

One of the key challenges is properly matching residents with appropriate housing, considering the variety of needs (substance abuse recovery, mental health support, job readiness, etc.). This requires careful screening and case management to ensure individuals are placed in environments where they can thrive and receive the support they need.

CHALLENGES

Community Resistance and Stigma:

Many transitional housing programs face opposition from surrounding communities due to stigma or concerns about safety, property values, or the potential for increased crime. Overcoming these barriers and building positive relationships with the local community can require considerable effort in advocacy and public education.

POLICIES & STRUCTURE

Develop Comprehensive Policies:

Establish clear, written policies covering all aspects of life in the transitional home, including rules around behavior, curfews, chores, substance use, and any other important guidelines. These policies should also define the length of stay, the support services provided, and how residents can progress through the program.

Create a Structured Program:

Implement a clear program that includes goals for residents, such as job readiness, life skills development, educational opportunities, and personal development. Providing structure and routine can help residents feel safe and motivated as they work towards independence.

What Matters



What Matters



What Matters



CONTACT US



ROAD 2 RECOVERY

"Your Pathway To Restoration"



Email

a.lynch@road2rllc.org



Phone

252 567-2819



Website

www.road2recoveryllc.com

Q & A

THANK YOU

